



**Mount Your GunCam® to Almost Any Gun That You Own!**

**WIDE FIELD OF VIEW - NO FISHEYE DISTORTION**



## **Quick Start Guide**

[www.tachyoninc.com](http://www.tachyoninc.com)



[facebook.com/tachyonxc](https://facebook.com/tachyonxc)  
[facebook.com/guncamera](https://facebook.com/guncamera)

**Technical Questions?**  
[support@tachyoninc.com](mailto:support@tachyoninc.com)

## Picatinny Rail Mount



- Your Picatinny Rail Mount is the main piece of the **GunCam**<sup>®</sup> system. It holds and protects your camera and attaches either directly to your gun's Picatinny Rail or to one of our special rails that, in turn, can be attached to your gun.

- Open the Picatinny Rail Mount with your hex key by removing the two screws on the side and lifting the top half.

- Insert your **GunCam**<sup>®</sup> into the bottom of the mount. Push it in straight to the bottom.

- Make sure that the camera is oriented correctly, with the Tachyon logo upright in relation to the final position that you will mount the camera.

- Replace the top cover and the screws.

- When assembling and disassembling your Picatinny Rail Mount, be very careful with the clear lens cover, as it is not permanently attached.

- The button on side of your Picatinny Rail Mount (Bottom Photo) is used for turning on and off the camera when the rear power button is blocked by the trigger guard of a pistol. This button will not work if your camera is not oriented inside correctly, so it is important to make sure the Tachyon logo is facing upwards.

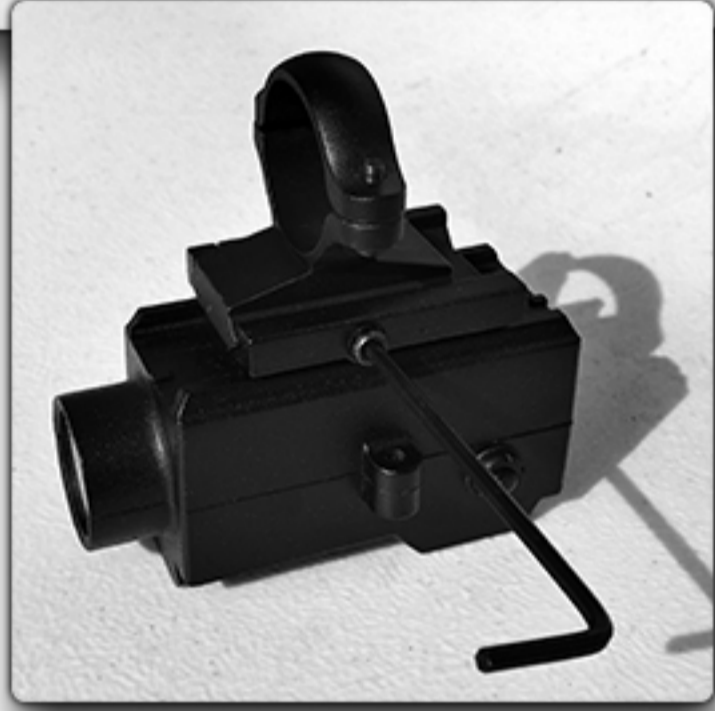
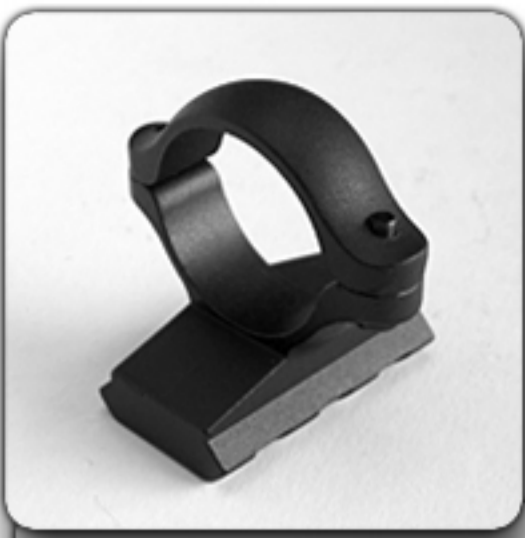
- The bottom of this mount is equipped with a Picatinny rail so that you will be able to mount additional accessories, such as flashlights.





## Mounting on Pump-Action Shotguns with the Magazine Rail

- The Shotgun Magazine Rail mounts to the magazine of your 12-Gauge pump-action shotgun. The Picatinny Rail Mount (with your camera inside) must then be mounted to that.
- Unscrew one or both of the screws on the rail with your hex key.
- Fit the mount firmly over the magazine of your pump-action shotgun. Then tighten the screws for a firm and secure fit.
- Mount the Picatinny Rail Mount, with your **GunCam**<sup>®</sup> inside, to the Magazine Rail using the same hex key.



## Semi-Automatic Shotguns with the Barrel Rail

- The Shotgun Barrel Rail mounts around your shotgun's barrel, allowing easy camera attachment with the Picatinny Rail Mount.
- Open the Barrel Rail with your hex key and fit it around the barrel of your shotgun. Then tighten the ring with your hex key.
- Now fit your Picatinny Rail Mount (with your camera inside) to the rail of the Barrel Rail and tighten the screw with the hex key.
- For 16 or 20-Gauge guns, use the included 3M fastening strips to thicken the barrel of your gun before attaching the barrel rail.





## Mounting on Pistols

- Securely mount the Picatinny Rail Mount to the 6 o'clock position on your pistol's rail, as in these examples.
- With pistols, your camera will almost certainly be too close to the trigger guard to operate the controls on the back, so you must make use of the button on the left side of the Picatinny Rail Mount. Push this button in to start your camera just as you would the power button on the back.
- On the bottom of the Picatinny Mount is another rail, giving you the option of mounting an additional item, such as a flashlight.

## AR or AK & Airsoft Guns

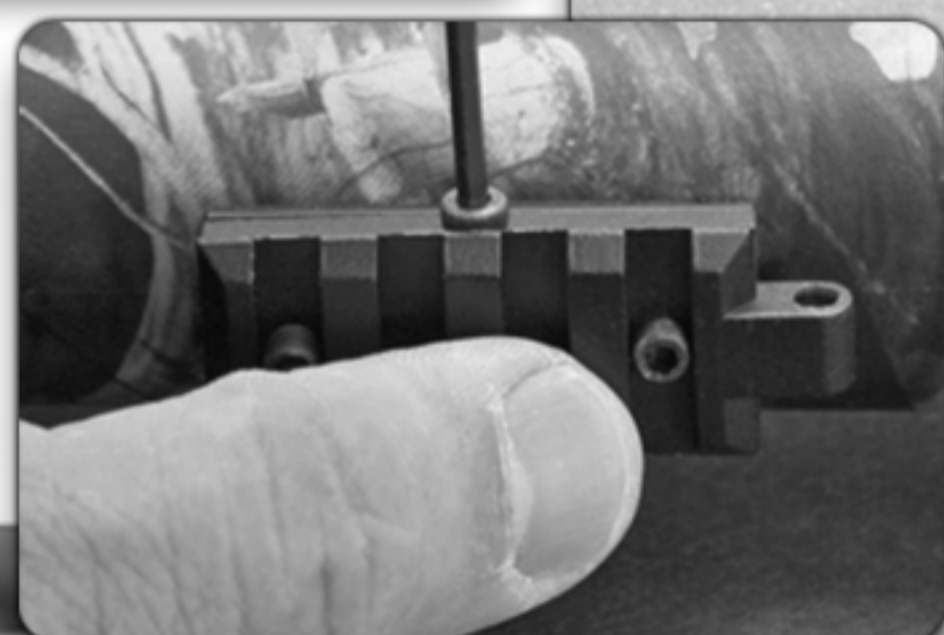
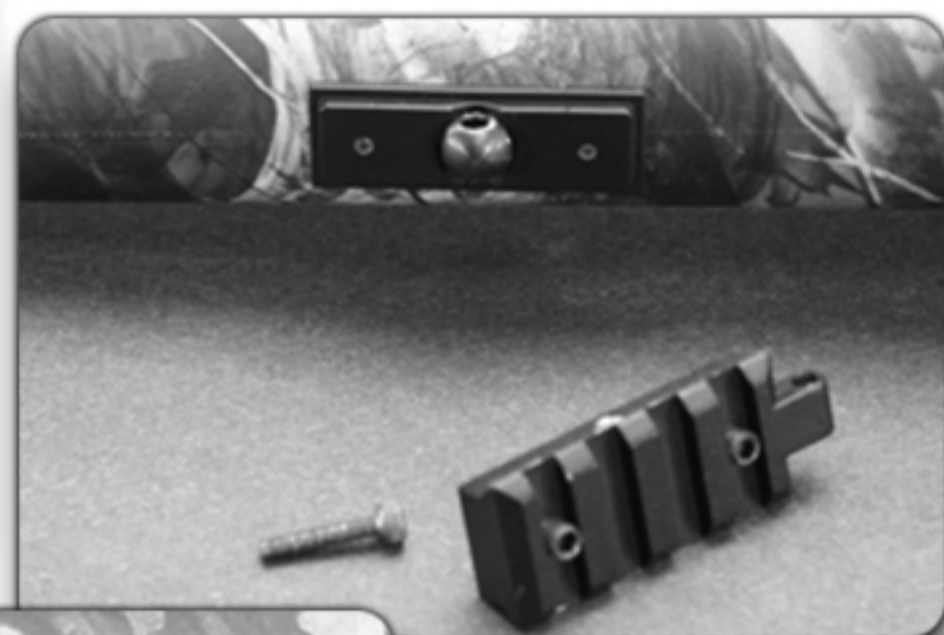
- The Picatinny Rail Mount lets you securely mount your **GunCam**<sup>®</sup> to your AR & AK or airsoft rifle's Picatinny rail.
- You can securely mount at the 6, 9, 12 and 3 o'clock positions on the rails of many types of large guns. You may also face the camera back towards the shooter, giving you the option of eight mounting directions.
- When mounting the camera in different directions, always make sure that it is oriented correctly. The side of the camera with the Tachyon logo should be upright inside the Picatinny Rail Mount, in relation to the final position that you will mount the camera to your gun.





## Mounting on Bolt-Action Rifles

- The Rifle Rail mounts beneath your rifle's forestock, around the nut for your rifle's strap.
- No permanent modifications to your rifle are required.
- After installing the Rifle Rail, reattach your rifle's strap to the nut on the back of the rail.



## Mounting on Scopes

- The Scope Rail mounts around your scopes to allow easy camera attachment with the Picatinny Rail Mount.
- You can mount your cameras facing forward or backwards. When video clips, taken facing forwards and backwards, are cut together they make for a very interesting video.
- To mount, open the ring of the scope rail with the hex key and slip it around your scope. Then tighten the screw with the hex key.
- Be sure to place your **GunCam**<sup>®</sup> inside your Picatinny mount upside down, with the Tachyon logo going in first. Do this because, unlike when attaching to the rifle or the shotguns, your camera will be flipped over when mounted on top of the scope. Reversing the camera inside the Picatinny Mount will ensure that your video come out right-side-up.
- Of course, it is also possible to shoot the video upside down and then flip it in the editing process.





## Mounting Paintball Markers & Masks

- Attach your camera to your marker with the Picatinny Rail Mount and either the Magazine Rail or the Scope Rail.
- You may need to wrap some (included) 3M Dual-Lock Fastener around your barrel to create the perfect fit.
- For mounting on your mask, attach the Clip Mount to the strap of your goggles and make sure that your GunCam is put into the mount with the Tachyon logo facing up.
- If you attach your camera to top or sides of your marker or mask be sure to rotate the camera inside the mount so that the Tachyon logo is facing up.
- When shooting paintball video, please always use the included Rainproof Cover to protect your lens from paint.



### Clip Mount

- Your Clip Mount can be used to take great video of any type of shooting.
- Mount it on the bill of your cap or on the strap of your goggles.
- Videos shot like this give you a great first-person-shooter perspective.



1080p GunCam®  
Camera of Choice for  
National & World Champions  
[www.tachyoninc.com/sportshooting.html](http://www.tachyoninc.com/sportshooting.html)