



GunCam[®] Plus

for Clays & Hunting



- Gen 5
- 4K Video
- Built-in Wifi

Quick Start Guide



Proudly Designed in the USA

- ☐ 64 GB
- ☐ 128GB
- ☐ 256GB

Thank you for choosing the Gen 5 Tachyon® GunCam®

There is no better tool for evaluating your shooting skills and recognizing your strengths and weaknesses.

Great video. Great sound. Light, rugged, and reliable.

Mounting the Camera on your Guns

- Your **GunCam® Plus** comes in a metal case.
- To remove the mount, use your hex key to unscrew the two screws.
- Peel off the backing paper and place the padding that was included with your camera. This padding is likely the best fit for most 12-gauge shotguns.
- If you find that your mount is loose, you can switch to a thicker padding. There are three other sets of padding with different thicknesses included. Additionally, you can purchase an additional mount for your 20 and 28 gauge shotguns. The side-by-side mount is sold separately.

Be sure to stick the pads to the mount and not to your gun.

- Close the case over the camera and shotgun barrel, and use the hex key to tighten the screws.
- Make sure to use the screws and washers together.

Mount the camera up to 4 inches behind the mouth of the barrel or choke. If your gun has a port, do not cover it. Instead, mount the camera behind the port. Your video will still be fine, but you will see the muzzle of the gun at the top of your screen.

The camera has two 4K Video mode. The 4K-1 mode on the left is calibrated for Over and Under shotguns, while the 4K-2 mode is calibrated for Semi-Auto Shotguns.



Charging (Camera is pre-charged for you)

- Open the flap on the side and pull it down.
- Insert the included charging and transferring cable into the socket and the other end into your power bank or wall adapter.
- Charging time with a 2A adapter for an empty battery can take up to 5 hours. A full charge will allow you to record up to 3.5 hours of video.
- The camera will stop charging and turn off the blue light when it is fully charged. If you do not see a blue light, it means that your camera is already fully charged.
- You should charge the battery at least once every three months to keep it active.

LED Functions



Video and Memory

- 4K Video Resolution. The 4K-1 mode on the left is calibrated for Over and Under shotguns, while the 4K-2 mode is calibrated for Semi-Auto Shotguns.
- The camera has a built-in memory of 64, 128, or 256GB and is ready to use out of the box. The built-in memory allows the camera to record up to 3, 6, or 12 hours of videos.
- The camera will automatically save a file and start a new one every ten minutes.



Power On/Off (Vibration and Sound)

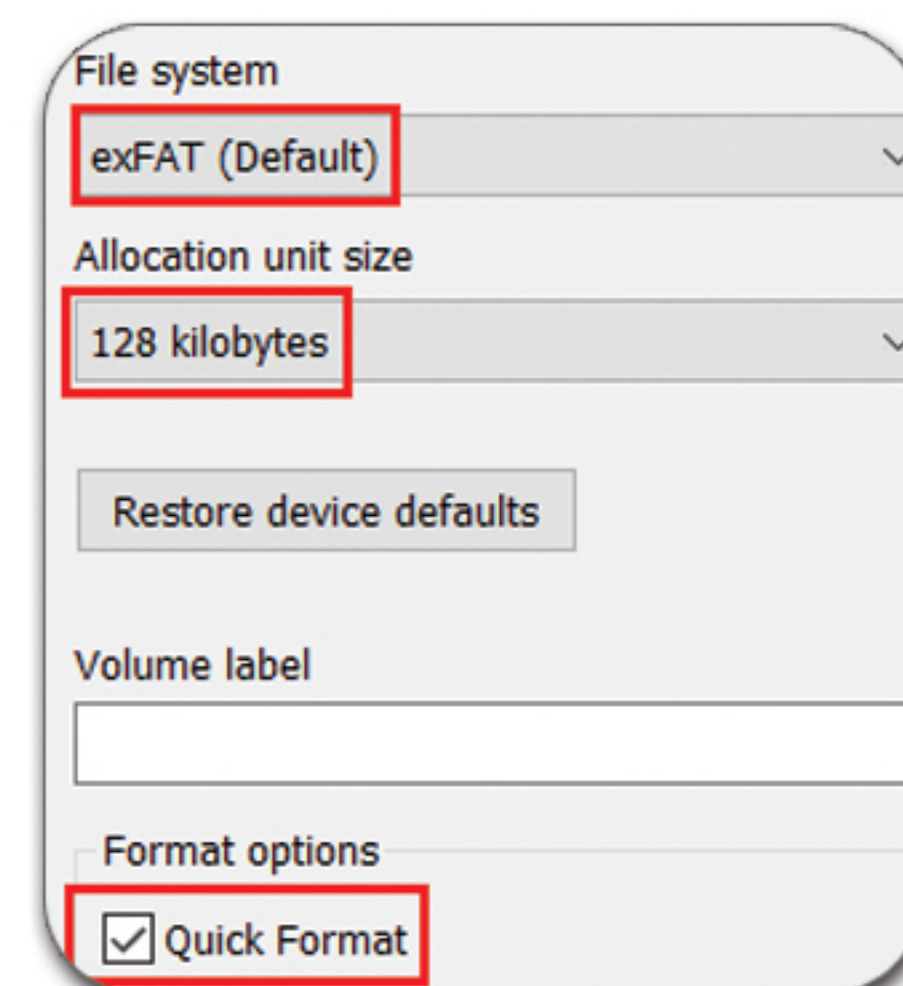
- We recommend for normal use that you switch to **Wifi-Off**.
- To Power-On and Record: Press and hold the power button for 2 seconds until you feel the start-up vibration. The LED on the right will turn from green to red.
- To Power-Off and stop Recording: Press and hold the power button for 2 seconds until you feel the turn-off vibration and see the red LED turn off.
- To **Pause**: During the recording, tap the power button to pause. You will see the red LED flashing, tap again to resume recording immediately. This feature is great for cutting out wasted video and making it easier to find the important seconds that you want to focus on. While paused, the camera will not use any memory, but it will still consume battery power.
- **Charge while Recording**: Plugging it into a 10,000 mAh power bank with an output of 2A or more, and pressing the power button to start recording. With a fully charged camera, this setup will allow you to record for 12 hours (When camera with built-in 256GB memory).

Opening & Transferring Video Files

- Connect your **GunCam® Plus** to your computer using charging and transferring cable.
- We suggest that you copy your files to your computer before playing, deleting or editing them.
- We highly recommend the **VLC Video Player** for playback on your laptops or desktops.
- The date and time on your camera will be automatically updated to your local time when you connect to your smartphone via the camera's Wifi and the Tachyon app. Your video files will be encoded with this time and date.
- The video files are under the iOS requirements, so changing the file name or moving the file to a different folder will render it incompatible, and you will be unable to import it to iOS devices.


Memory Format


- To format the memory, check the quick format box to format, select exFAT (default) and 128 kilobytes. After formatting, the first time you turn on the camera, it will run a one-time diagnostic test. The green LED will blink for several seconds and then turn off. The red light will automatically turn on to begin recording.
- You should format the memory at least once every six months.




Tachyon Inc.

 support@tachyoninc.com

 www.tachyoninc.com

 www.facebook.com/GunCamera

 [TachyonGunCamera](https://www.instagram.com/TachyonGunCamera)



How To Use the App with the camera's Wifi Mode

- Search for "Tachyon" in your App Store or Google Play and look for the Tachyon GunCam logo.
- Download and follow the instructions to install the app on your device.
- Switch the camera to **Wifi-On** mode and turn it on. You will see a **White** LED on the left and a **Green** LED on the right, indicating that the Wifi signal is now emitting from your camera.

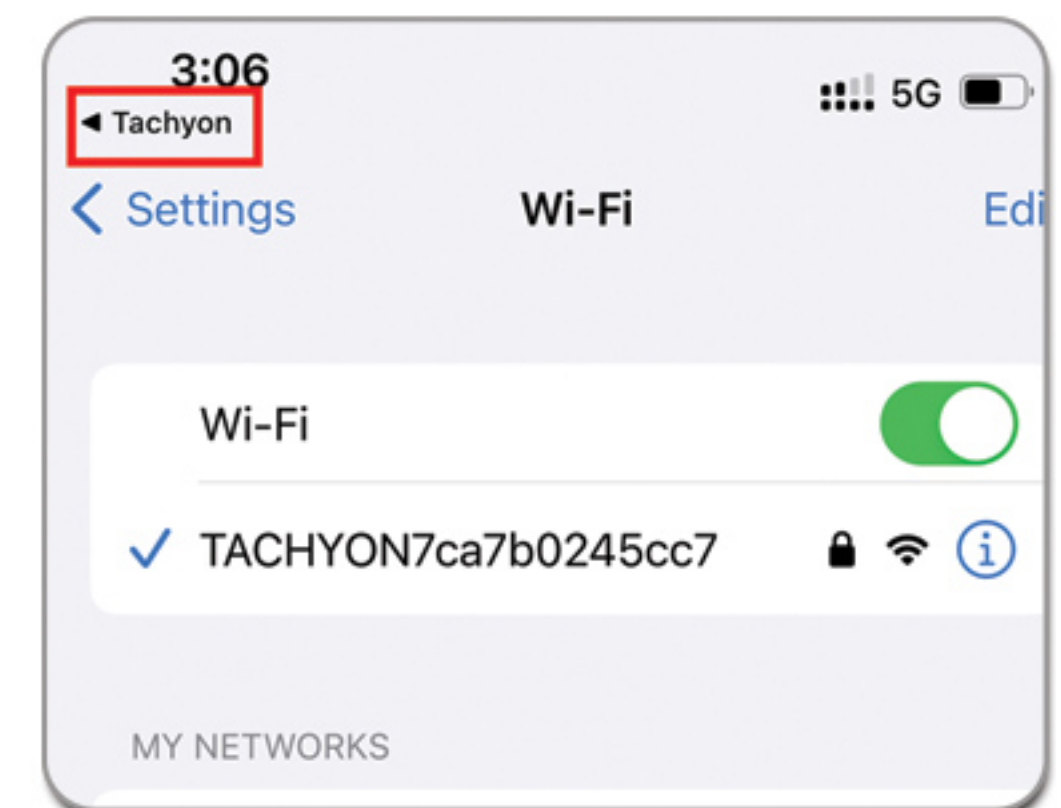
***The camera has built-in WiFi, so you do not need any external Wifi source.**

***Wifi-On mode will require higher battery usage, limiting you to around 2 hours of power.**



Setting up your iPhone and iPad:

1. Click the **ENTER** button, and then click **Confirm** when asked, "Connect to the camera?"
2. Location: **ALLOW**; Local Network: **ON**; Cellular Data: **OFF**.
3. Click the top-left **<Settings** icon, go to the Settings page, and select **Wi-Fi** to choose the TACHYONXXXXXXXXXXXX connection. If you do not see this network, refresh your list.
4. Enter the password **12345678** and click **Join**. The password will be saved.
5. Once you see the **checkmark** in front of the connection, click the top-left **◀Tachyon** icon (above the **<Settings**) to return to the ENTER page.
6. Click **ENTER** to see the view from your camera.



Setting up your Android Phone and Tablet:

1. Click the **ENTER** button, and then click **OK** when asked, "Connect to the camera?"
2. Choose the TACHYONXXXXXXXXXXXXX connection. If you do not see this network refresh your list.
3. Enter the password **12345678** and click **Connect**. The password will be saved.
4. When you see "Internet may not be available," choose **Always connect**.
5. You will see "Connected without internet" to confirm that you are connected.
6. Click the back button on the bottom right to return to the ENTER page.
7. Click **ENTER** to see the view from your camera.



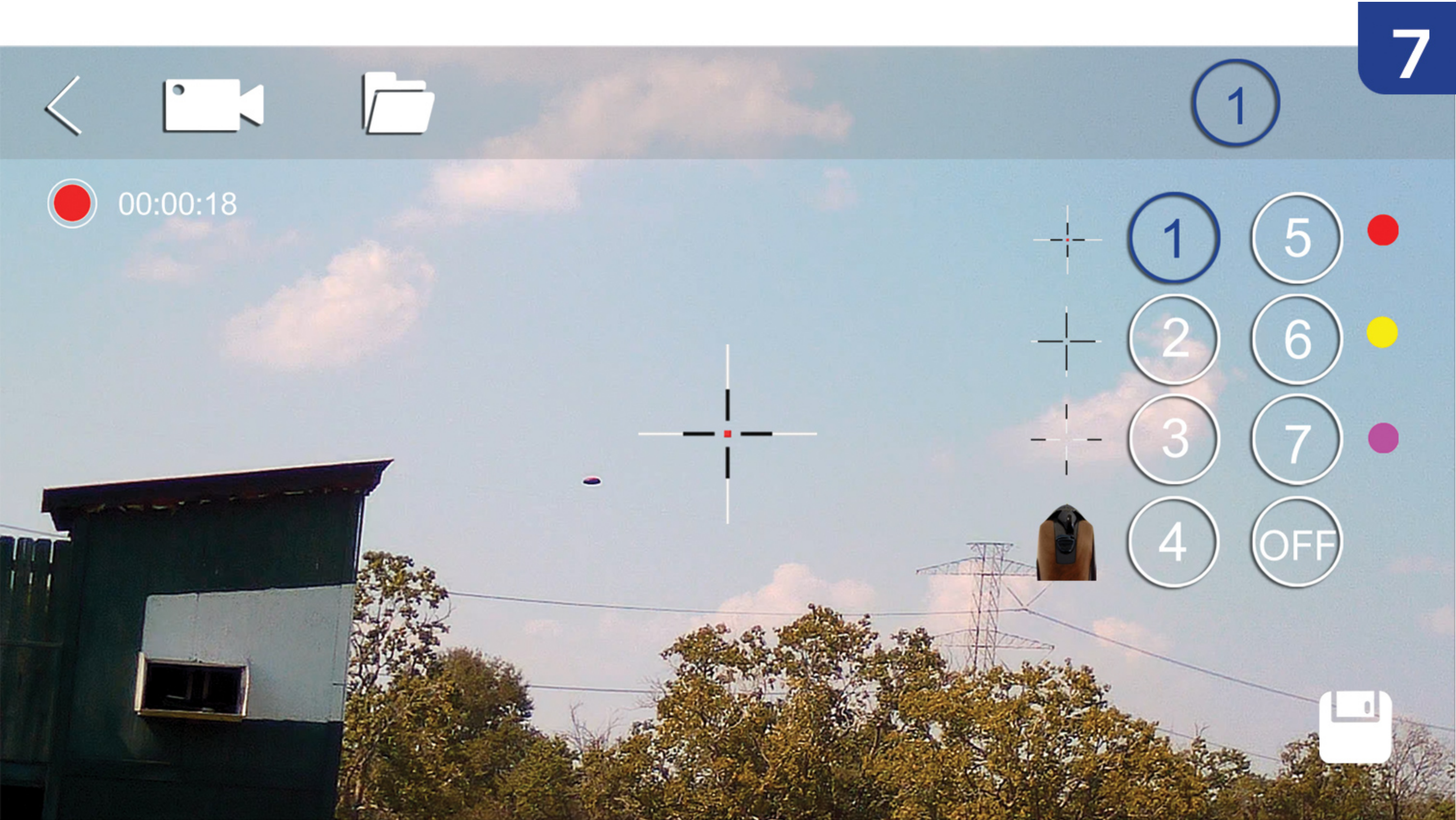
Previewing and Recording Video From Your Phone

- This feature is particularly useful when shooting with a coach or friends, as they can start and stop recording from a phone or tablet within a range of 10 feet or 3 meters. Afterward, you can review the footage and adjust your approach if needed.
- To begin recording a video, click on the Movie Camera icon at the top-left. You will notice that the green LED changes to red, and the elapsed recording time will appear.
- If the camera moves more than 10 feet away from the phone, the recording will stop.
- To stop recording, simply click the Movie Camera icon again, and the red LED will change back to green.

The Reticle

For patent reasons, Tachyon does not allow customers to calibrate the reticle. We have preset it to provide the best aiming reference point possible, giving users a better idea of where they are shooting and making videos more exciting.

- To choose a reticle style, click on the Choose Reticle icon and select one of the seven available styles. You can also choose to have no reticle displayed on your screen. Please note that once recording has started, the reticle style cannot be changed.
- The camera has two 4K Video modes. The 4K-1 mode on the left is calibrated for Over and Under shotguns, while the 4K-2 mode is calibrated for Semi-Auto Shotguns.
- Save your settings by clicking on the Save icon at the bottom-right.



The Gen 5 Tachyon® GunCam® Plus Models

The GunCam Plus offers three full-function models with Wi-Fi capabilities that can be used with the Tachyon App. It also has built-in memory of 64GB, 128GB, or 256GB, allowing you to record up to 3, 6, or 12 hours of footage before looping starts and earlier files are overwritten.



The GunCam® is **NOT waterproof**, but it is weather-resistant when used with **the Rainproof Cover**. We strongly recommend using the cover at all times to protect against rain, other foreign elements, and the possibility of static shock.

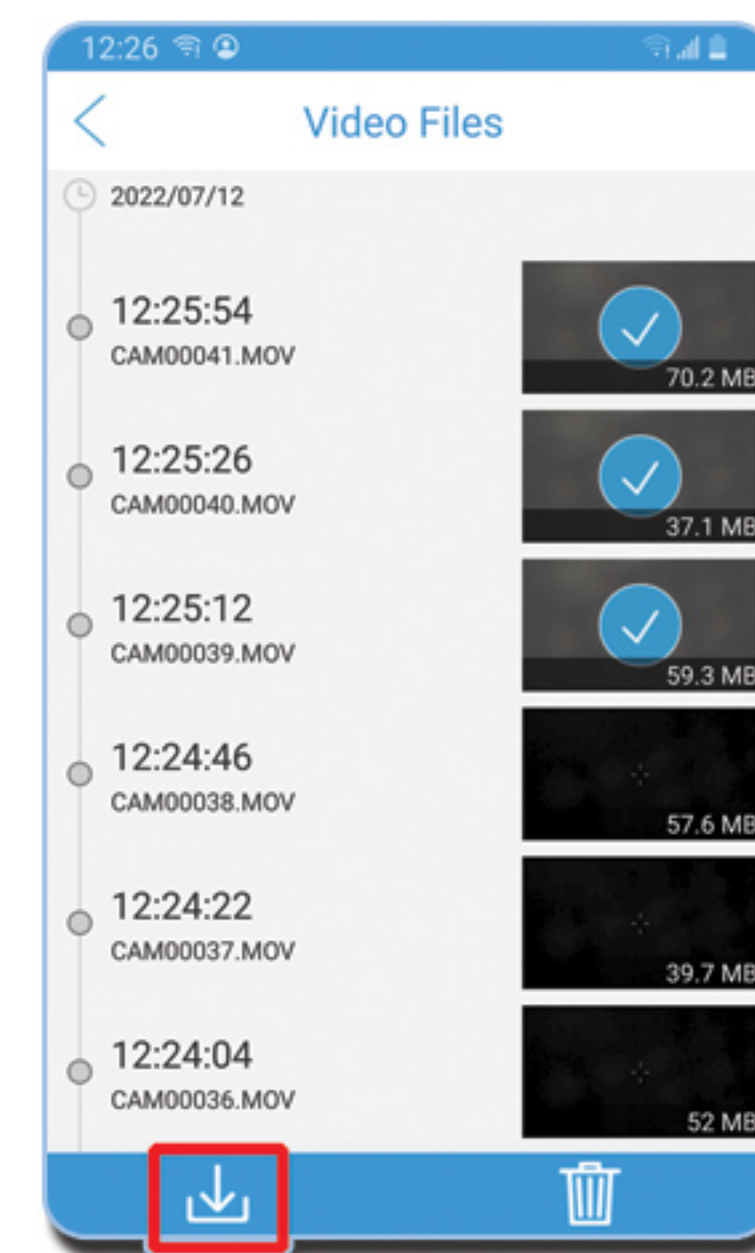
Viewing Video Files, Playback & Slo-mo

- To open your recorded files, click on the open folder icon. The thumbnail at the top of the list is your most current recording.
- Click on any video to play. You may expand the video to full screen using the expanding arrows icon, and you can adjust the speed of your videos with the speed percentage icons.
- The default playback speed is 20%, but you can tap the playback icon for 10%, 20%, 30%, or 100% (normal speed). You can pause the video before playing it back at 100% speed.



Download files

- These videos are stored on your camera and not on your phone. For smoother playback, we recommend downloading them to your phone before watching.
- Press one or more of the video thumbnails until they show a check, then click the download icon. Depending on the length of the videos, this process may take some time. Once completed, you can switch off the camera and watch the videos on your phone.



*To transfer large data from the camera to your phone, you'll need a newer phone (less than 3 years old). Otherwise, you may experience lags or connection issues. If you can't find the Tachyon network on your phone, we suggest restarting the camera and trying again.

Disclaimer: Tachyon, Inc. Will not under any circumstances be responsible for injuries or property damage incurred during the use of any of our products.

Tachyon, Inc. Will not under any circumstances be responsible for injuries or property damage incurred during the use of any of our products.

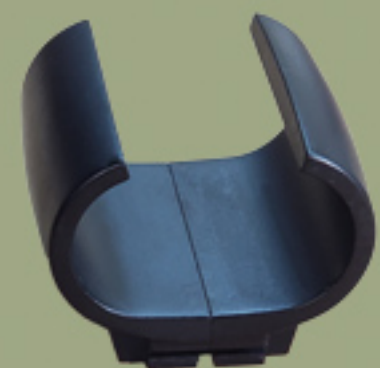
At its sole discretion, Tachyon Inc. may make changes to the Products specifications and functions in accordance with the needs.



Shotgun mount



(Included)



Side-by-Side (SxS) mount (Sold separately)